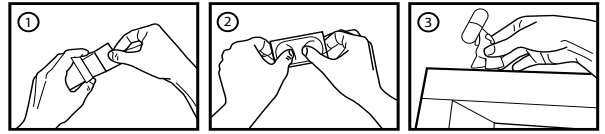


Omni directional radiation through aerial mode exclusively (direct contact not recommended).

Figurine efficiency is partly dependent upon proper knowledge of its' mode of action. Careful reading of the notice is thus recommended. If need be, do not hesitate to ask further detailed explanations from your retailer.

- After opening the box, attain inner emptiness (fig.1)
- Extract the figurine from the blister while taking a deep breath (fig.2)
- Display the figurine at the most appropriate location in the room (fig.3)



**Please read the instruction sheet carefully before positioning this figurine and keep this notice for future reference.** If you have further questions, if you are unclear about any of the information, consult your retailer or write to : [info.zee@urfabulous.ch](mailto:info.zee@urfabulous.ch)  
This figurine has been purchased for personal but non-exclusive consumption. You may give or lend it to others without hesitation should they experience identical manifestations, as it would only prove beneficial. The act of giving actually heightens the effect.

## FIGURINE CHARACTERISTICS

### Designation

25g Zee injected figurine

### Compound quality

ATBC (Phthalates-free PVC), Art

### Compound quantity

24.979g ATBC in solid form, .021g art in radiation form per figurine

### Outer appearance

2.5" size in 12 color variants plus 3 special black, grey and glow-in-the-dark tints

### Packaging

blister seal in blind box with notice

### Developer

URFabulous – Boulevard Saint-Georges 21 – 1205 Geneva Switzerland

## WHEN TO USE THIS FIGURINE

This figurine is an alpha-X mimetic compound. It operates as an immediate and lifelong energy enhancer by increasing emission and reception frequencies through radiation.

It is prescribed in cases of chronic or occasional energetic disorder and possible somatization.

Your retailer may recommend using it alone or in conjunction with the continued action of one or several additional figurines, according to your specific needs. It may also be indicated preventively against disorder and possible somatization due to any upcoming and anticipated events.

In the event of an increase in energetic disorder or possible somatization following exposition to the figurine, do not renew direct exposure and contact your retailer. In case of uncertainty, please seek retailer or manufacturer advice.

## WARNINGS

### When not to use this figurine

In the absence of amelioration, consult your retailer immediately. Should the presence of a usually effective figurine prove unsatisfactory, if crises, energetic disorder or somatization become more frequent, there is a risk of a worsening condition. Promptly consult your retailer, who will re-evaluate his proposal.

DO NOT HESITATE TO SEEK RETAILER OR MANUFACTURER ADVICE IN CASE OF UNCERTAINTY.

### Special warnings

In cases of chronic or occasional energetic disorder and possible somatization, expected improvements must be established directly following the exposition of and exposure to the figurine.

### Precautions for use

This radioactive figurine must be allowed to act upon the entire energetic spectrum for which it is conceived. If the spectrum is cluttered (i.e. through excess noise or parasites) its' efficiency may be diminished. Consult your retailer without delay to obtain a more appropriate offer.

### Possible interactions

To avoid possible and unwanted interactions between several designer toys, any and all other figurines in your custody must be mentioned without exception to your retailer or to the manufacturer. Studies have shown cumulative effects when several figurines are displayed in relation to each other, bringing about beneficial secondary effects depending upon figurine combination. Regular exposure to full moonlight may preserve and/or amplify figurine efficiency. If the full series is displayed, favorable DNA alterations and readjustments may be induced over long-term use.

### Pregnancy – breastfeeding

Under normal conditions of use, this figurine may be used throughout pregnancy. In case of pregnancy or breastfeeding, seek retailer advice.

## HOW TO USE THIS FIGURINE

### Dosage

- In case of energetic disorder or possible somatization: display the figurine upon experiencing manifestations and enter receptive mode. A favorable disposition is necessary for positive effects to occur. This procedure may be augmented if necessary by contemplating figurines for several minutes. If disorders do not recede rapidly, consult your retailer immediately.
- Preventing energetic disorder or possible somatization in the case of an upcoming event: look directly at the figurines for several minutes leading to the event's occurrence. The daily dose of radiation is unlimited but daily exposure may not usually exceed 24 hours (see warnings).

IN ANY CASE, STRICT COMPLIANCE WITH YOUR RETAILER'S OFFER IS MANDATORY. SHOULD DISORDERS PROVE PERSISTING, CONSULT YOUR RETAILER IMMEDIATELY.

### Use of a figurine

The figurine must be displayed immediately following extraction from the blister and its' location may be switched at any time it is deemed necessary. Do not expose it to extreme temperatures.

### Frequency and intervals of display and contemplation

In case of energetic disorder or possible somatization: the figurine must be displayed at the earliest manifestations and until their complete disappearance.

To prevent energetic disorder or possible somatization related to an upcoming event: contemplate the figurine several minutes before the event and, if possible, glance repeatedly towards it during the event itself for best results.

### Duration of remedy

Follow your retailer's instructions and proposals. If an overdose is suspected, consult your retailer. As is the case with active compounds, these figurines may bring about a variety of more or less beneficial effects.

## Cleaning

Figurines must be cleaned at least once a week to guarantee long-term efficiency.

## How to clean your figurine?

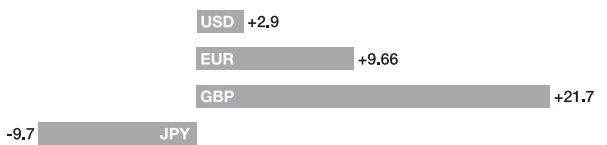
- Place the figurine in an uncluttered zone free of impurities and dust. Use a dust removal antistatic cloth to gently wipe all of the figurine's surface.
- In case of more extensive dirtiness, use an all-purpose liquid detergent on dry cloth. Lightly moisten the cloth and gently scrub away the stains.
- Do not soak the figurine in water. Dry it carefully.
- Once these operations have been completed, put the figurine back in place.

## PROPERTIES

Each of the 5 figurines of the CharacterStation.com silver series set have properties which may help you make more money. However, these effects may be decreased or increased in real time depending on the evolution of currency exchange rates between the Swiss franc and several currencies. The secret figurine always influences according to the most favorable currency.

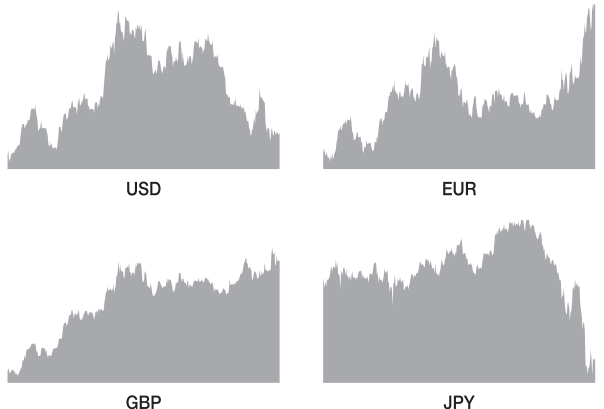
## PERFORMANCE OF THE SWISS FRANC OVER A ONE-YEAR PERIOD

(OCT 2007- NOV 2008)



## EVOLUTION OF THE SWISS FRANC OVER A ONE-YEAR PERIOD

(OCT 2007- NOV 2008)



## INTERACTIONS AND SIDE EFFECTS

When two or more figurines are in the presence of each other, their effects combine to generate new influences according to basic color wheel theory. For instance, a blue figurine together with a red figurine yields similar results to that of a single purple (or violet) figurine in addition to their respective effects. Resulting color mixes being quasi infinite, their effects may vary widely. In order to generate cumulative effects by interacting within a common field, figurines must be displayed so as to be facing each other.

SHOULD YOU NOTICE INTERACTIONS PROVOKING UNIQUE AND YET UNLISTED OR UNKNOWN INFLUENCES, PLEASE ADVISE YOUR RETAILER OR THE MANUFACTURER DIRECTLY.

ALL SIDE EFFECTS ARE PRESUMED TO BE BENEFICIAL.

## STORAGE AND SAFEGUARDING

Radiating figurine : do not expose to excessive heat. Do not dismantle nor throw into a fire, even if broken.


## INSTRUCTION SHEET REVISION DATE

September 2008

Visual design:

 **vingtneuf degres**  
Villars-sur-Glâne – CH  
[www.29-degres.com](http://www.29-degres.com)

Distribution:

 **CharacterStation.com**  
CP 493 1211 Geneva 4 - CH  
[www.characterstation.com](http://www.characterstation.com)

 **URFabulous**  
[www.urfabulous.ch](http://www.urfabulous.ch)

The URFabulous Laboratory takes part in recycling, collecting and elimination of figurine waste. You are thus required to return original figurine packaging to your retailer, empty or otherwise.